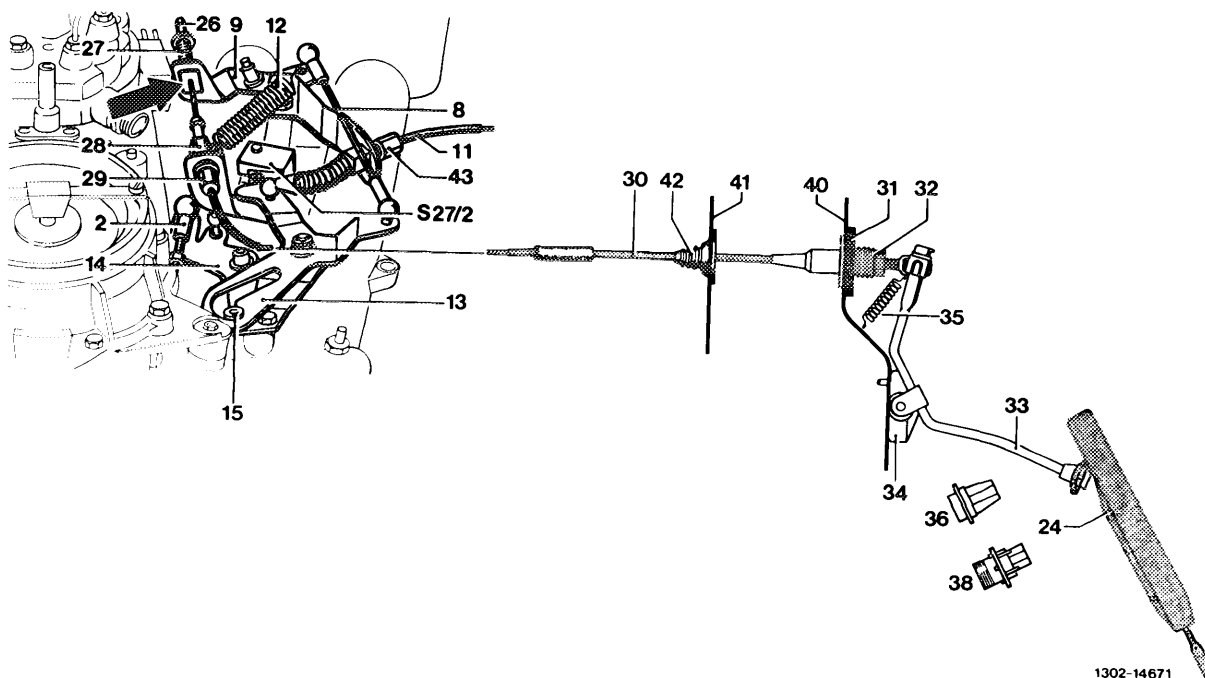


# A. Model 124



|                                  |  |
|----------------------------------|--|
| Control linkage and Bowden cable | check for easy operation and evidence of bending. Renew parts if necessary.  |
| Bowden cable (30)                | disconnect. To do so, press off plastic clips (arrow).   |
| Connecting rod (2)               | disconnect. Check if throttle valve rests against idle stop. Reconnect connecting rod without tension. Adjust so that the roller (15) rests against the end stop without tension in the slotted link arm (13). |
| Connecting rod (8)               | adjust to approx. 155 mm and connect. Measured from center to center of the ball socket.   |
| Bowden cable (30)                | connect. The nipple (26) of the Bowden cable (30) must contact the compression spring (27) without tension. Adjust Bowden cable (30) from the vehicle inside by means of adjusting nut (32).                   |

Full throttle stop . . . . .

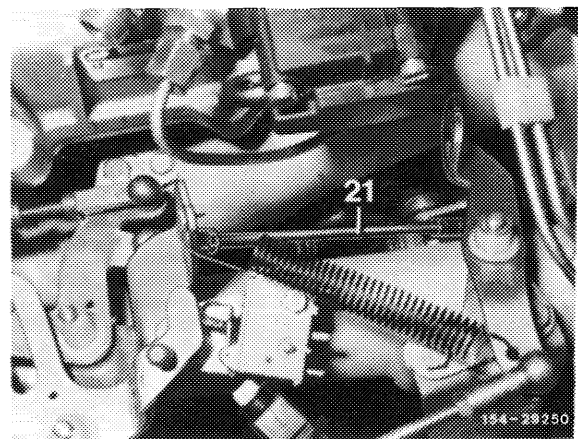
check. Disconnect control pressure cable (11) for automatic transmission. With engine switched off, press accelerator pedal from the vehicle inside up to full throttle stop (36) or, with automatic transmission, to the stop of the kickdown switch (38). While doing so, the throttle valve lever must rest against the full throttle stop. Adjust adjusting screw (29) on the Bowden cable if necessary. Slowly allow accelerator pedal to return into idle position. In this position, the roller in the slotted link arm must contact the end stop without tension and the microswitch (S27/2) must be actuated. Adjust the Bowden cable (30) from the vehicle inside by means of the adjusting nut (32) if required.

Control pressure cable (11) for automatic transmission . . . . .

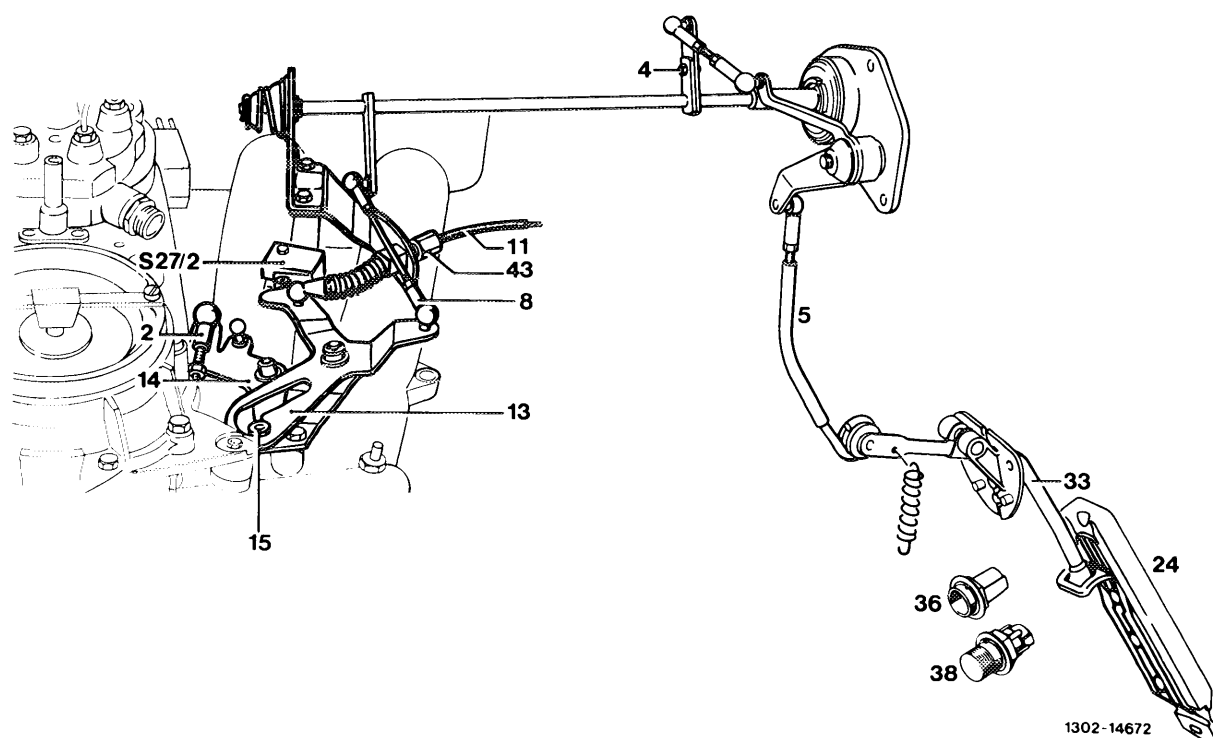
adjust. Push Bowden cable back, then pull forward against noticeable stop. Connect control pressure cable without tension, adjust with adjusting screw (43) if necessary.

### Vehicles with cruise control

Check if the final control element contacts the idle speed stop of the cruise control. To do so, disconnect pushrod (21) and push lever of the control element clockwise against the idle speed stop. When connecting the pushrod (21), ensure that the lever of the control element is lifted by approx. 1 mm off the idle speed stop. Adjust pullrod if necessary.



## B. Model 126



|   |   |
|---|---|
| Control linkage . . . . .                                       | check for easy movement and evidence of bending. Renew parts if necessary.  |
| Connecting rod (2) . . . . .                                    | disconnect. Check if the throttle valve rests against the idle speed stop. Reconnect connecting rod without tension. Adjust so that the roller (15) contacts the end stop in the slotted link arm (13) without tension.   |
| Connecting rod (8) . . . . .                                    | adjust and connect. Model 107 = 120 mm, model 126 = 105 mm, measured from center to center of the ball socket.  |
| Full throttle stop . . . . .                                    | check. Disconnect control pressure cable (11) for automatic transmission. With the engine switched off, press accelerator pedal from the vehicle inside up to the full throttle stop (36) or, with automatic transmission, up to the stop of the kickdown switch (38). While doing so, the throttle valve lever must contact the full throttle stop. Loosen adjusting screw (4 or 7) if necessary, adjust control linkage so that the throttle valve lever contacts the full throttle stop.<br>If the full throttle or idle speed stop is not achieved with this position, adjust pushrod (5) from the longitudinal control shaft to the accelerator pedal to the specified length, model 107 = 105 mm, model 126 = 220 mm, measured from center of ball socket to the center of damper ring. To check, slowly allow accelerator pedal to return into idle speed position. In this position, the roller in the slotted link arm must contact the end stop without tension and the microswitch (S27/2) must be actuated. |
| Control pressure cable (11) for automatic transmission. . . . . | adjust. Push back Bowden cable, then pull forward against noticeable stop. Connect control pressure cable without tension, adjust with adjusting screw (43) if required.  |

## Vehicles with cruise control

Check if the final control element contacts the idle speed stop of the cruise control. To do so, disconnect pushrod (21) and press the lever of the control element clockwise against the idle speed stop. When connecting the pushrod (21) ensure that the lever of the control element is lifted approx. 1 mm above the idle speed stop. Adjust pull rod if necessary.

